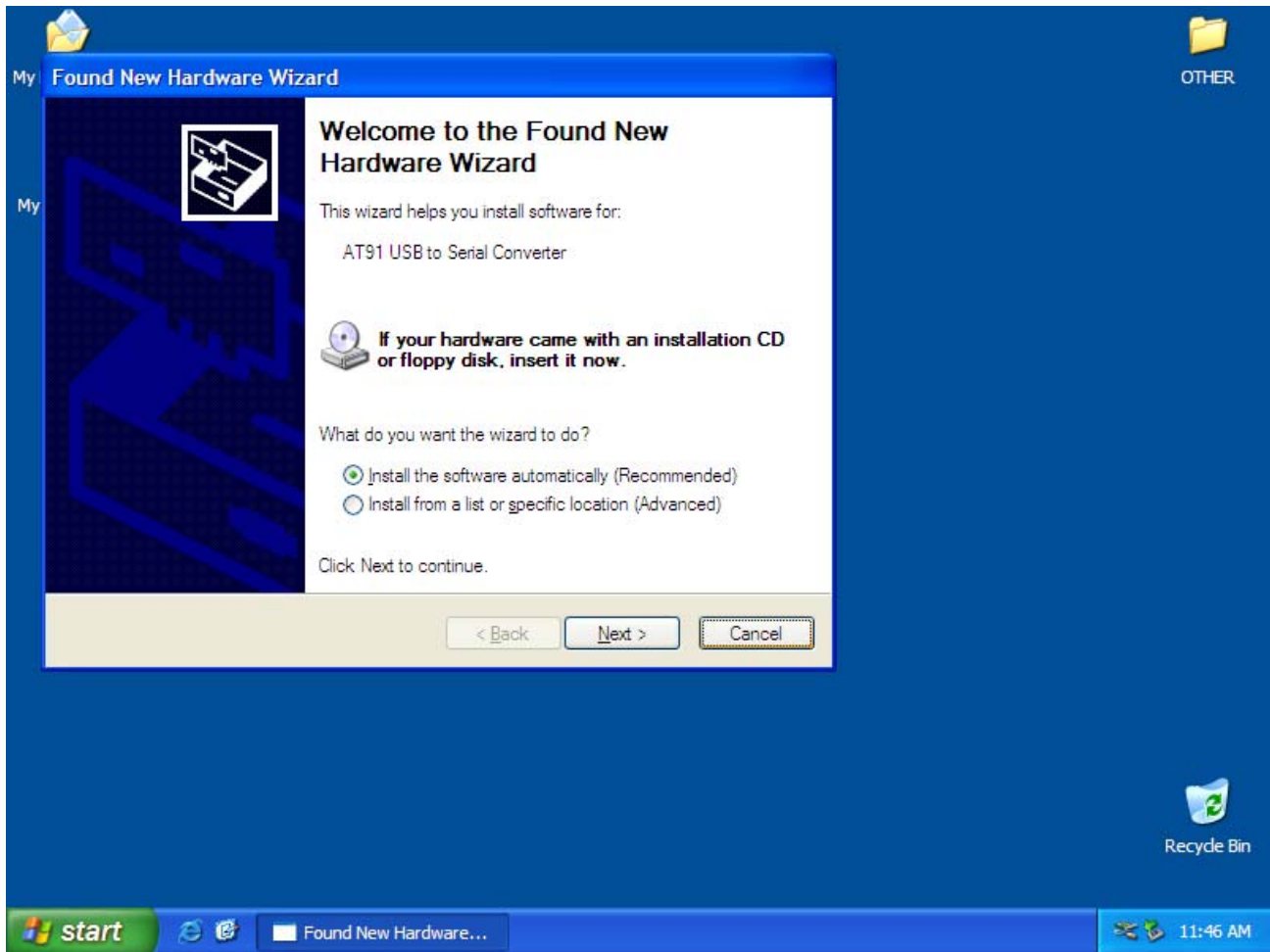


CANTieCAR First Time Drivers Installation

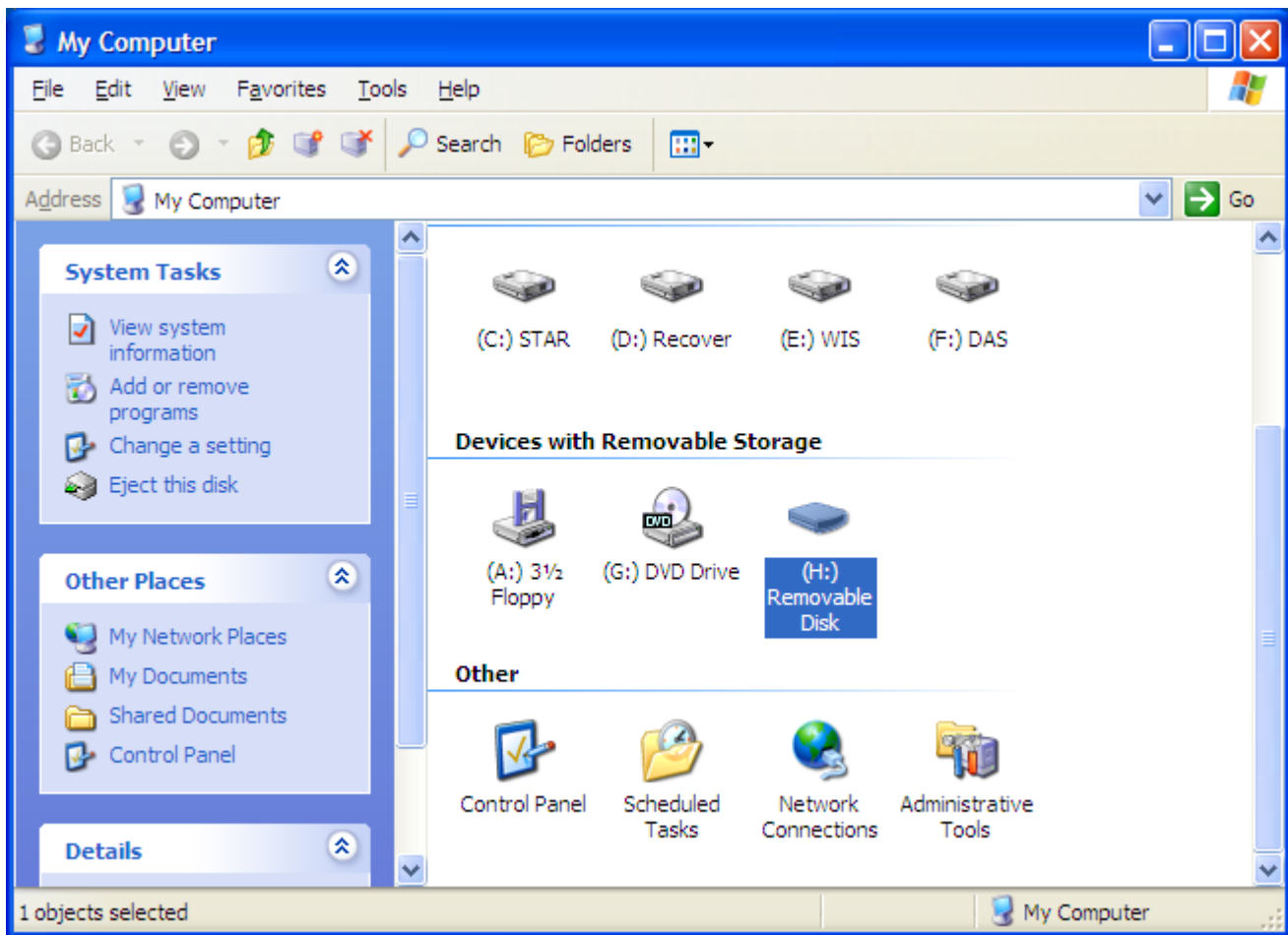
1. Connect USB-AB cable to CANTieCAR
2. Connect USB-AB cable to PC (Port USB 1.1/2.0 ONLY, it is not working in USB 3.0)
3. Windows would to say about new hardware



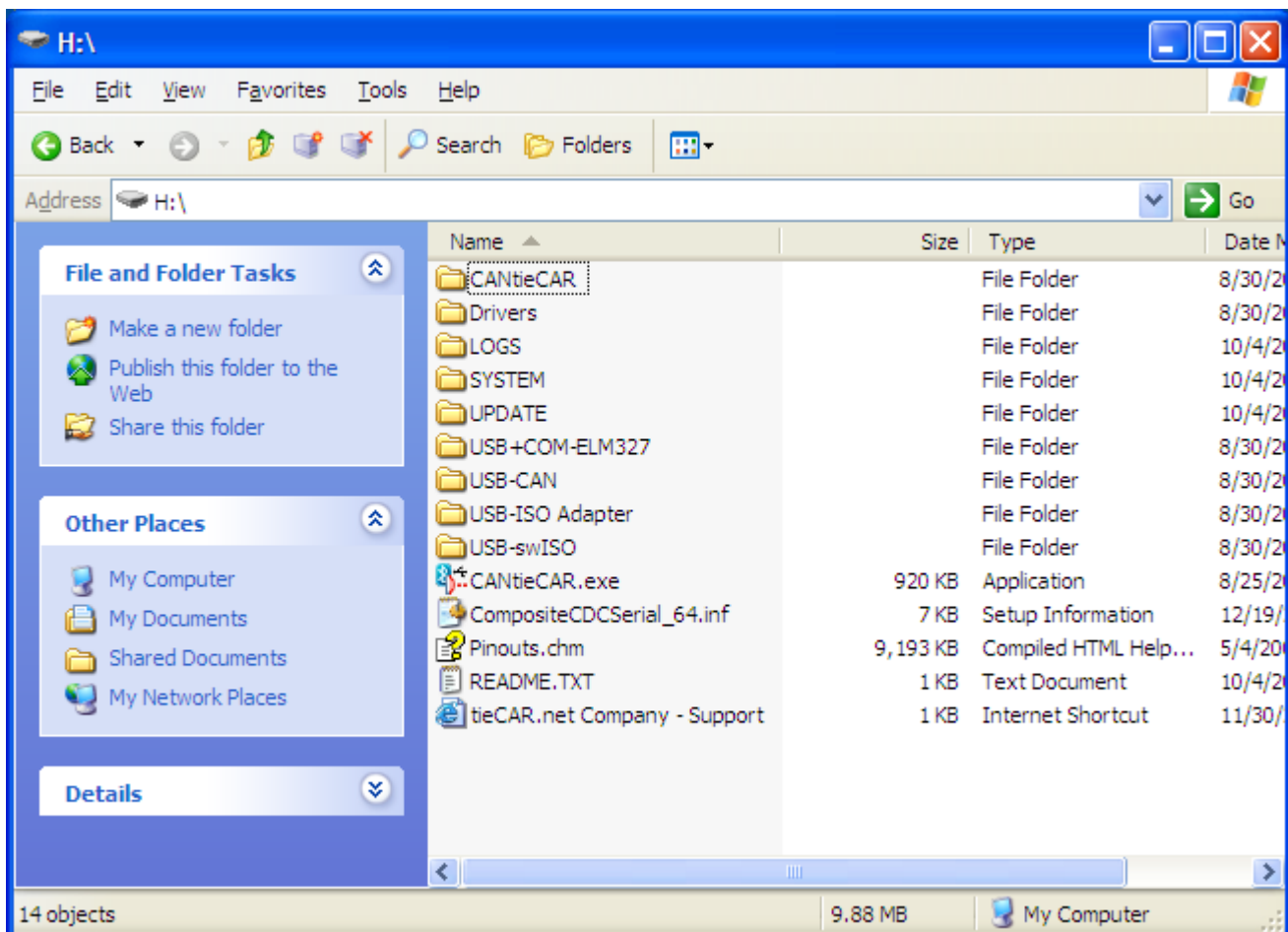
4. Skip driver installation – Press “Cancel”

(to continue check next page)

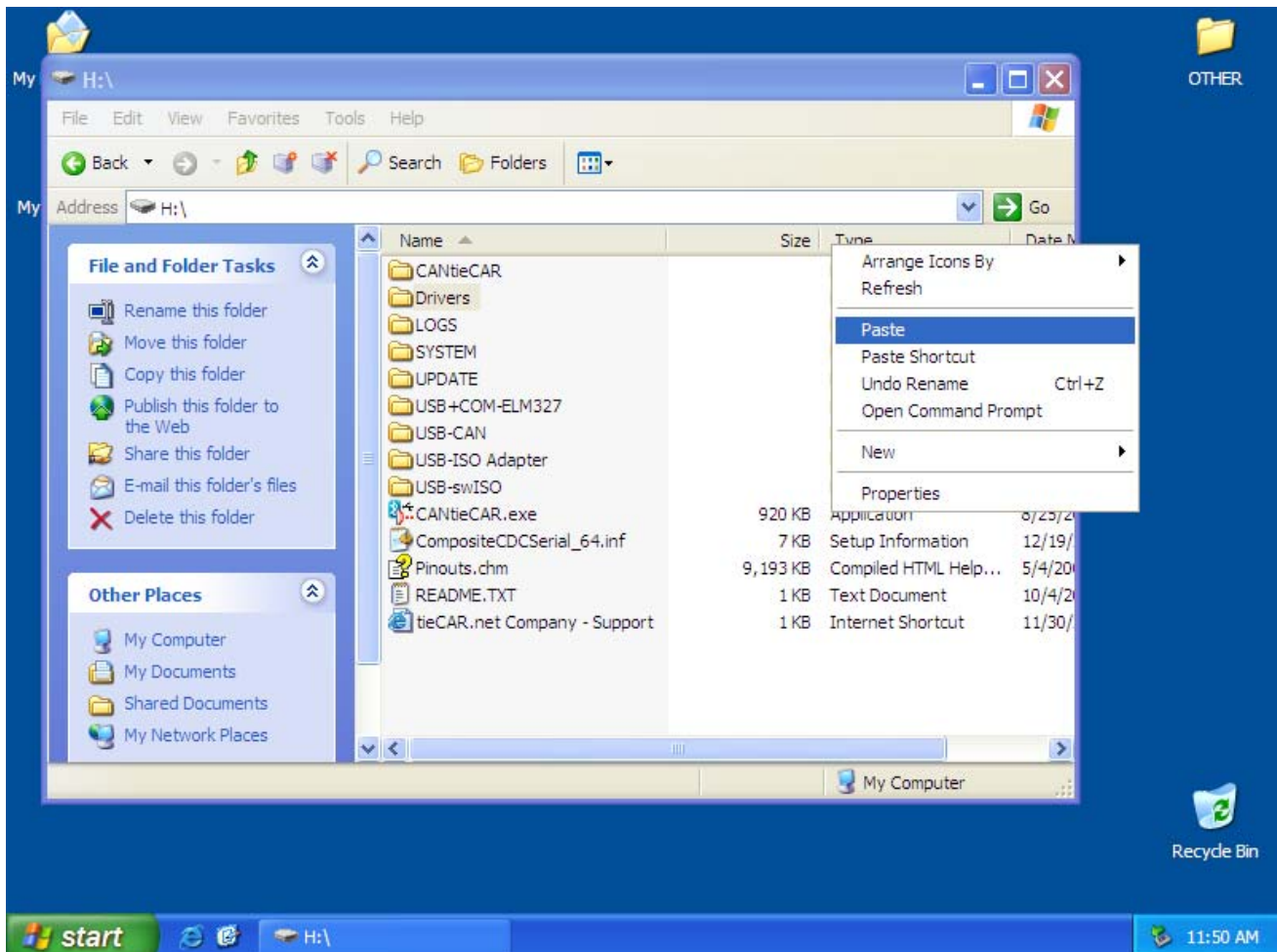
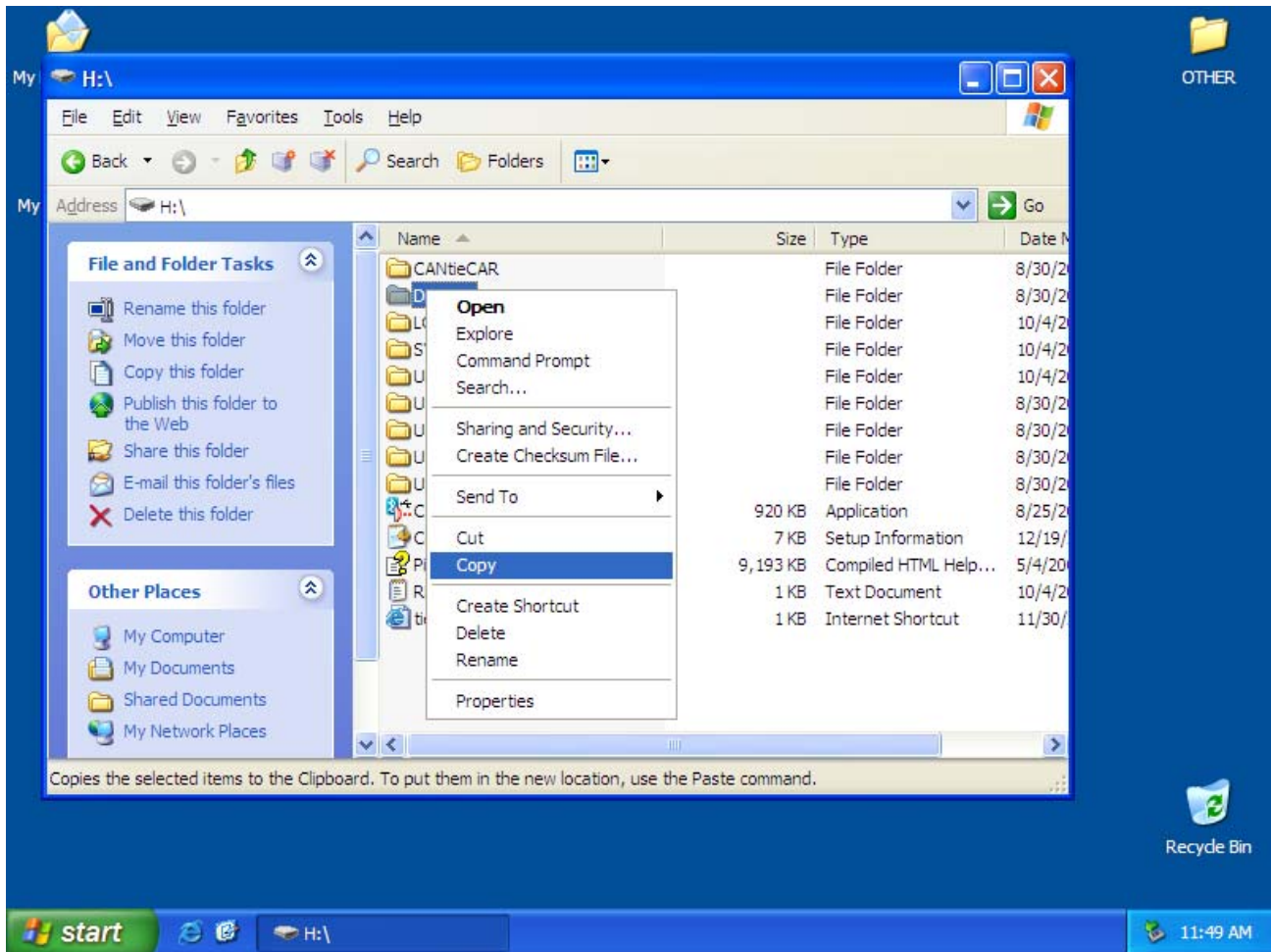
5. Wait for installing second device – Removable Storage

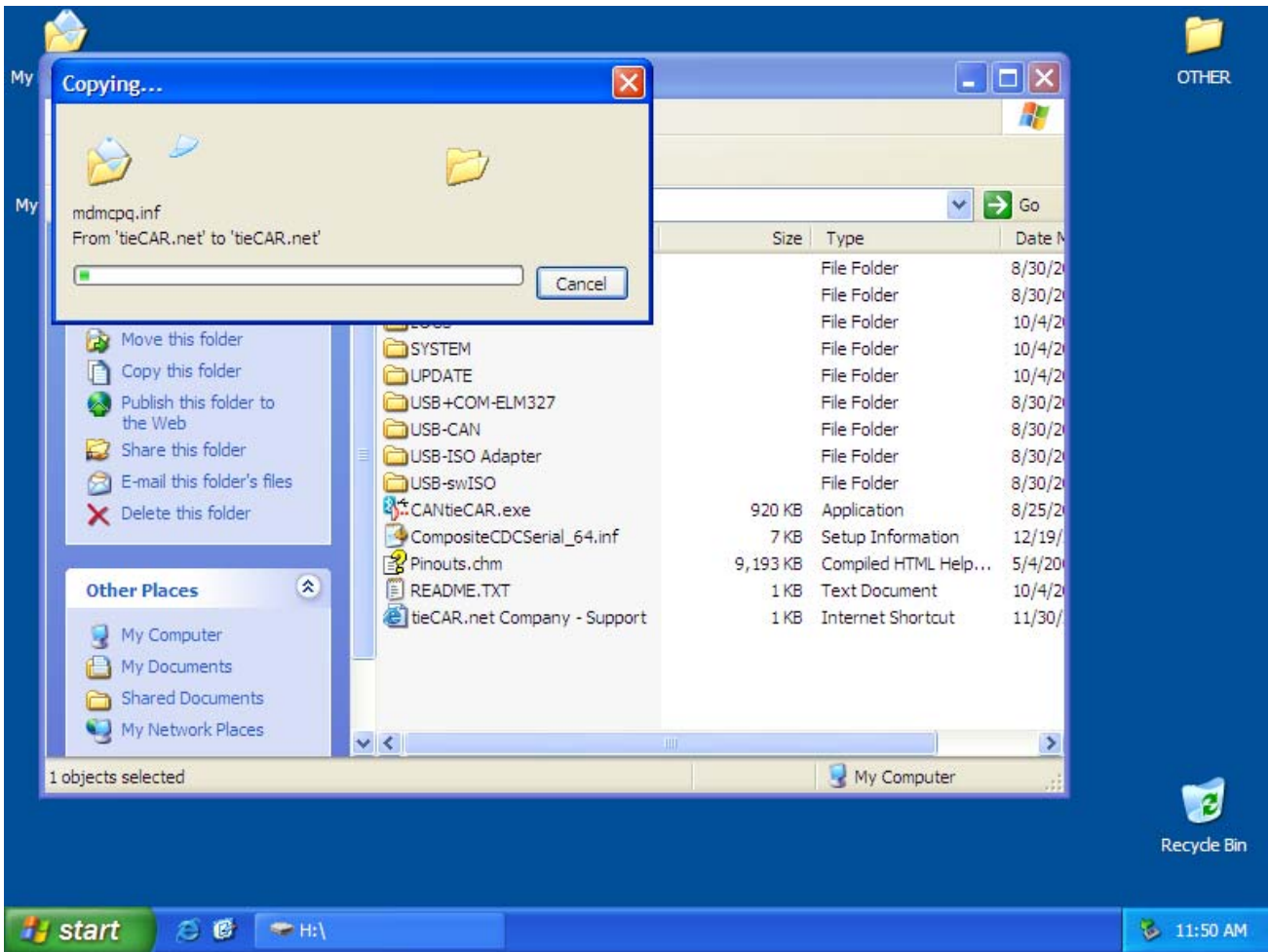


6. Open CANTieCAR built-in storage disk

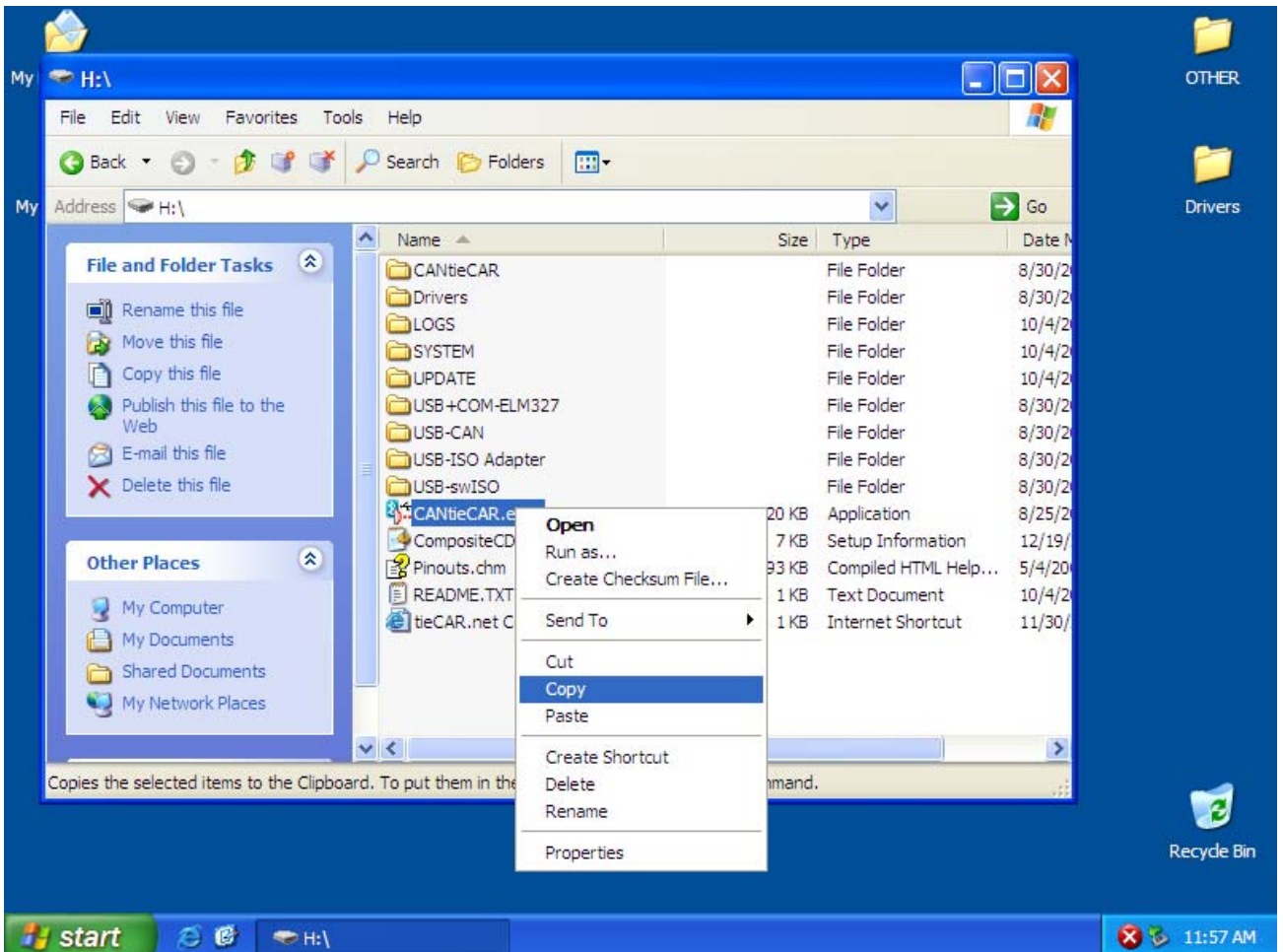


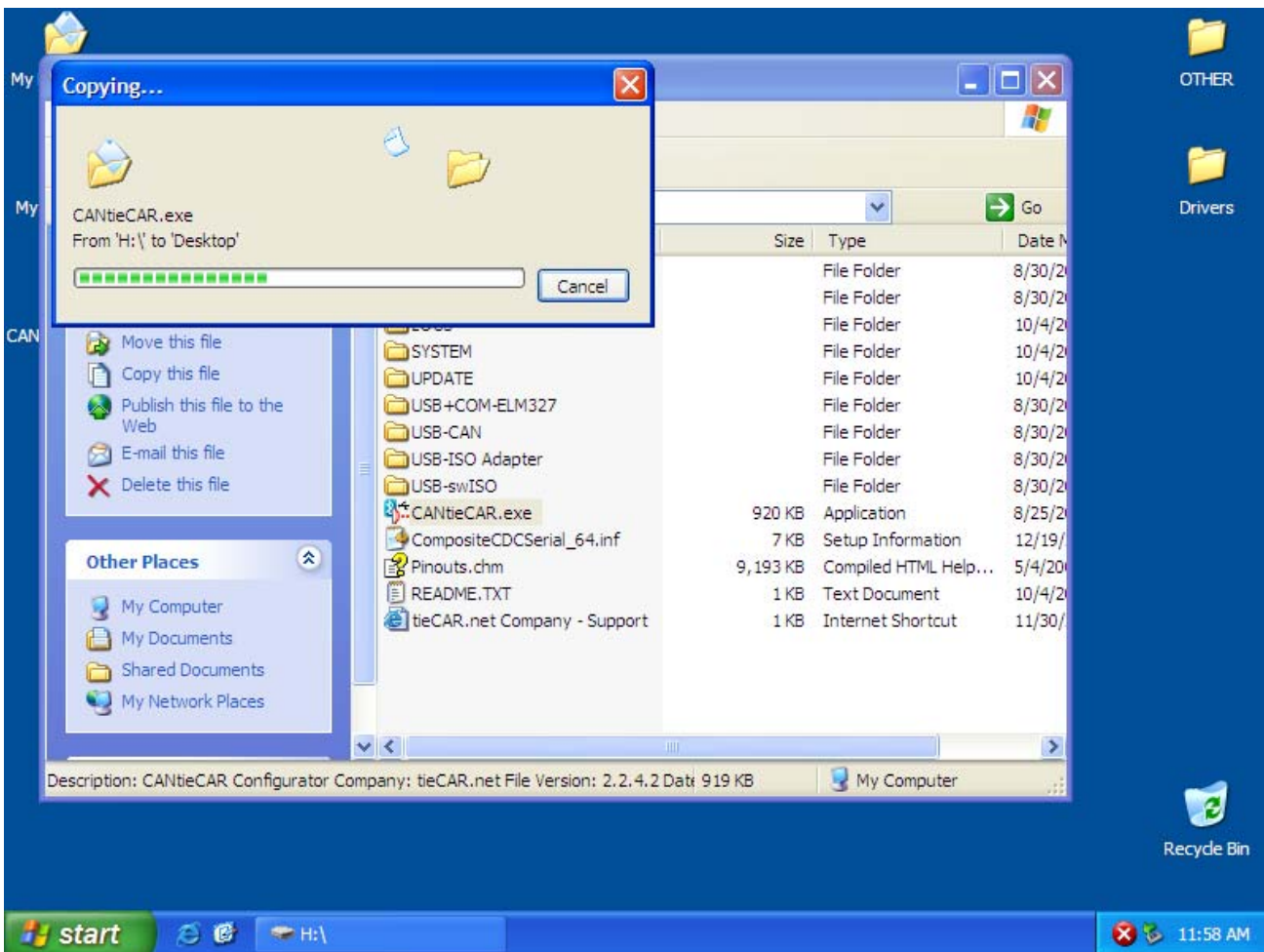
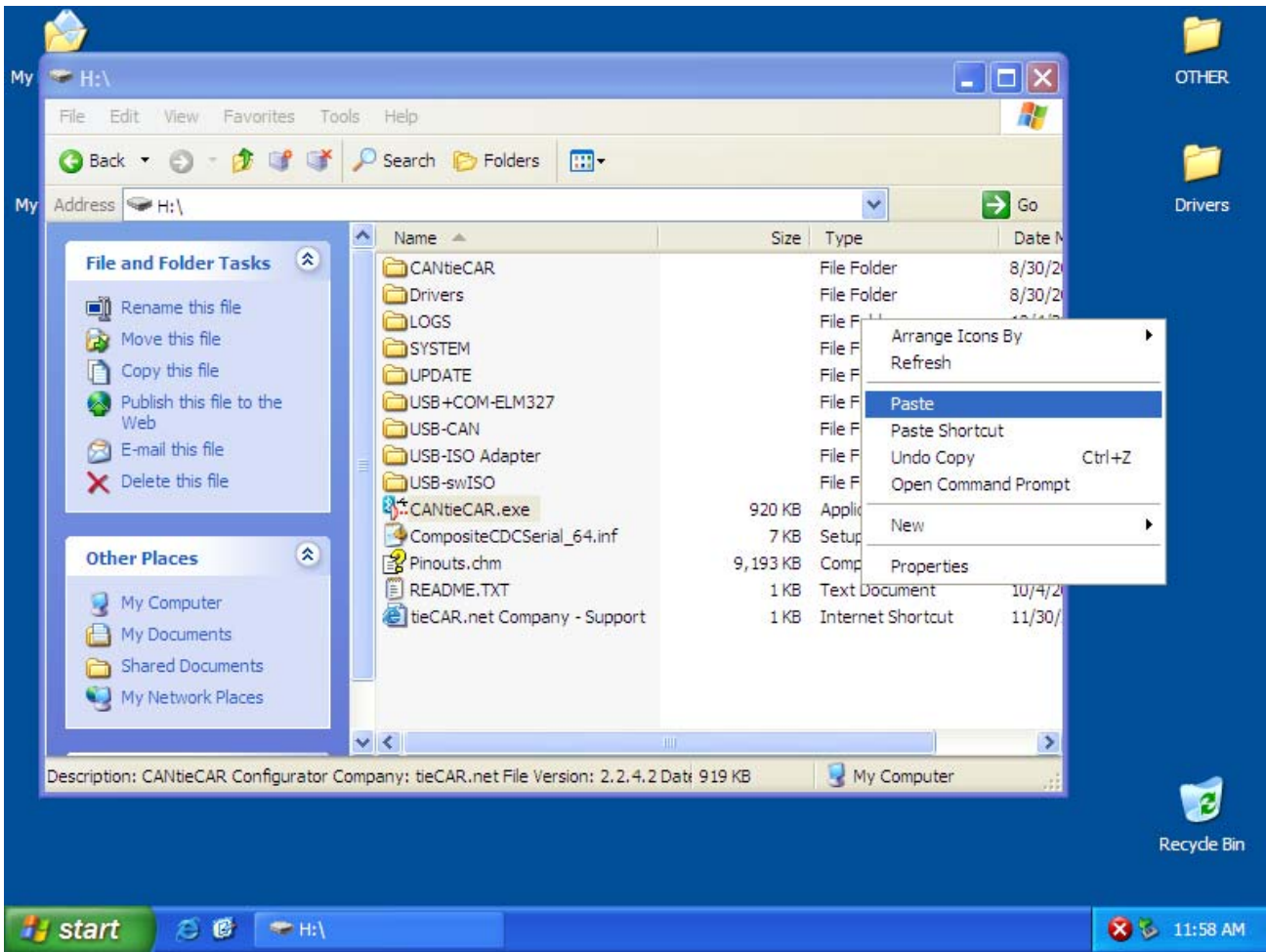
7. Copy Driver folder to your desktop





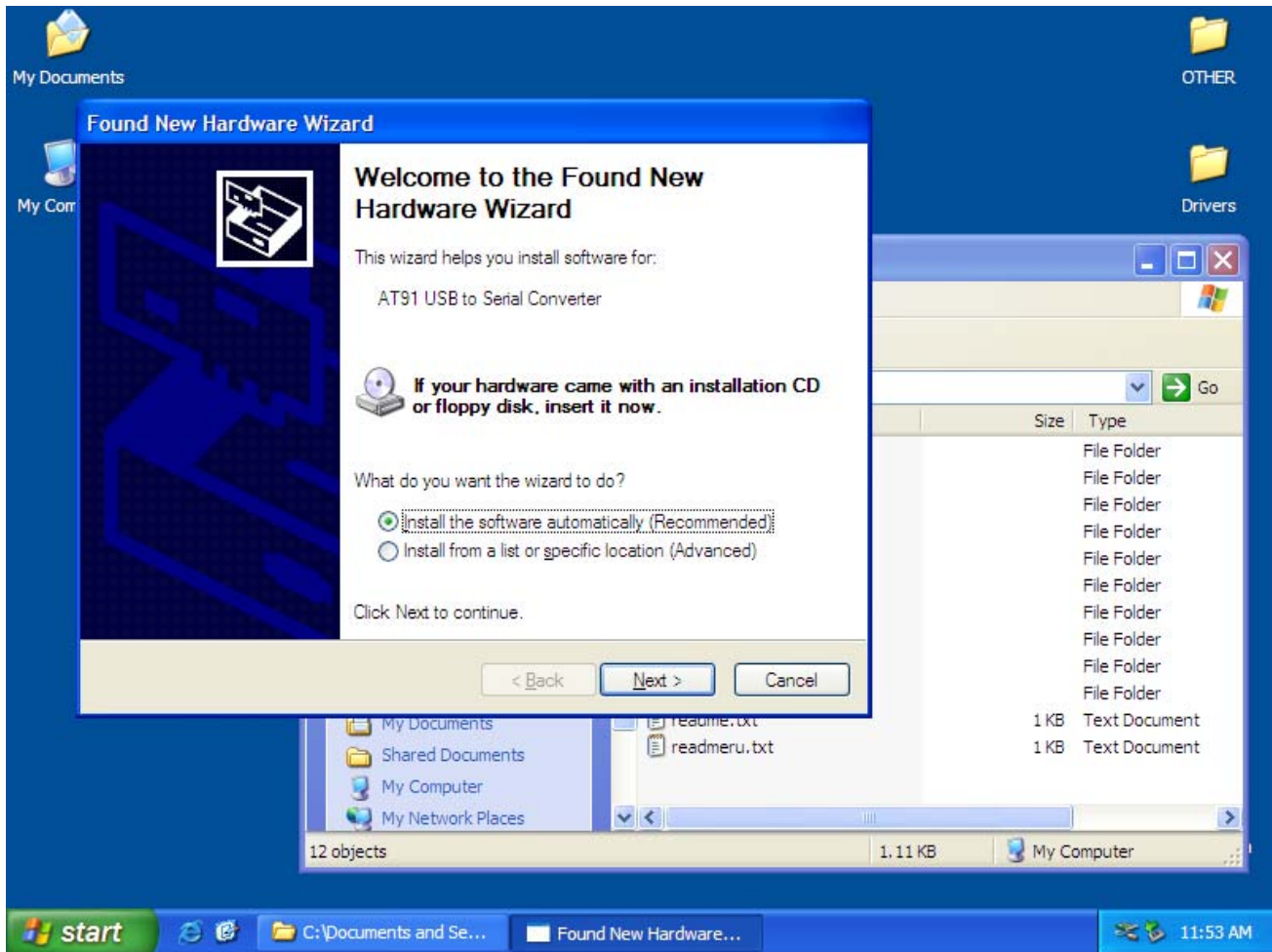
8. Copy CANTieCAR Configurator application to your desktop



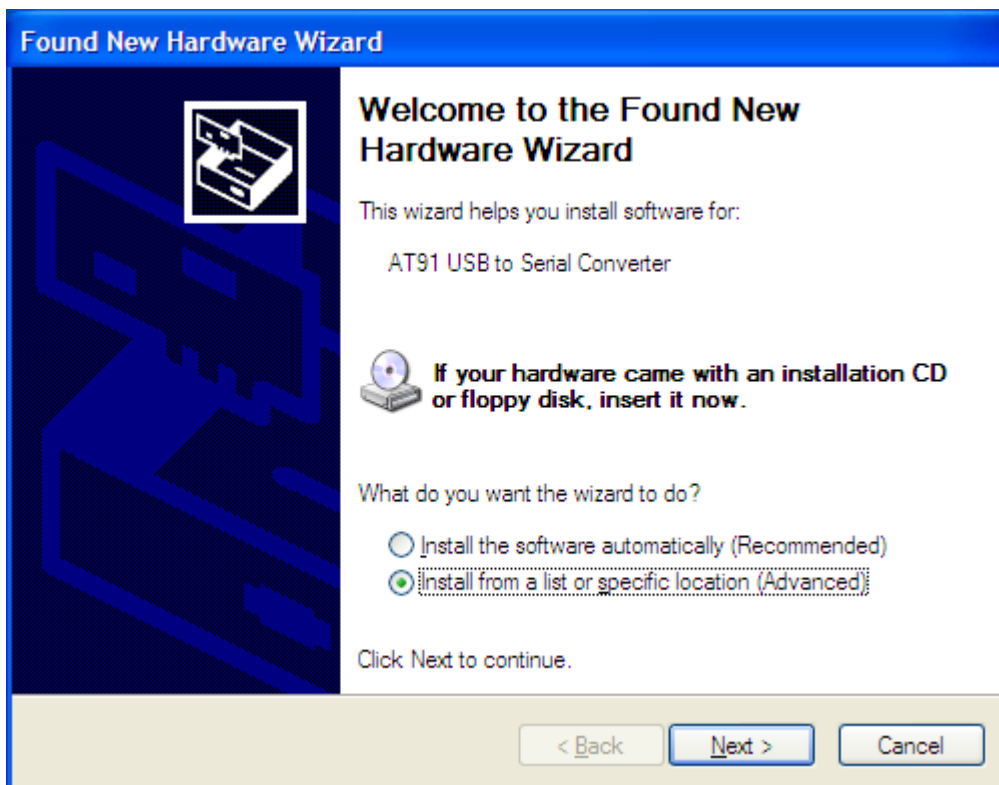


9. Disconnect USB-AB cable at PC
(to continue check next page)

10. Connect USB-AB cable to PC (Port USB 1.1/2.0 ONLY, it is not working in USB 3.0)
11. Windows would to say about new hardware

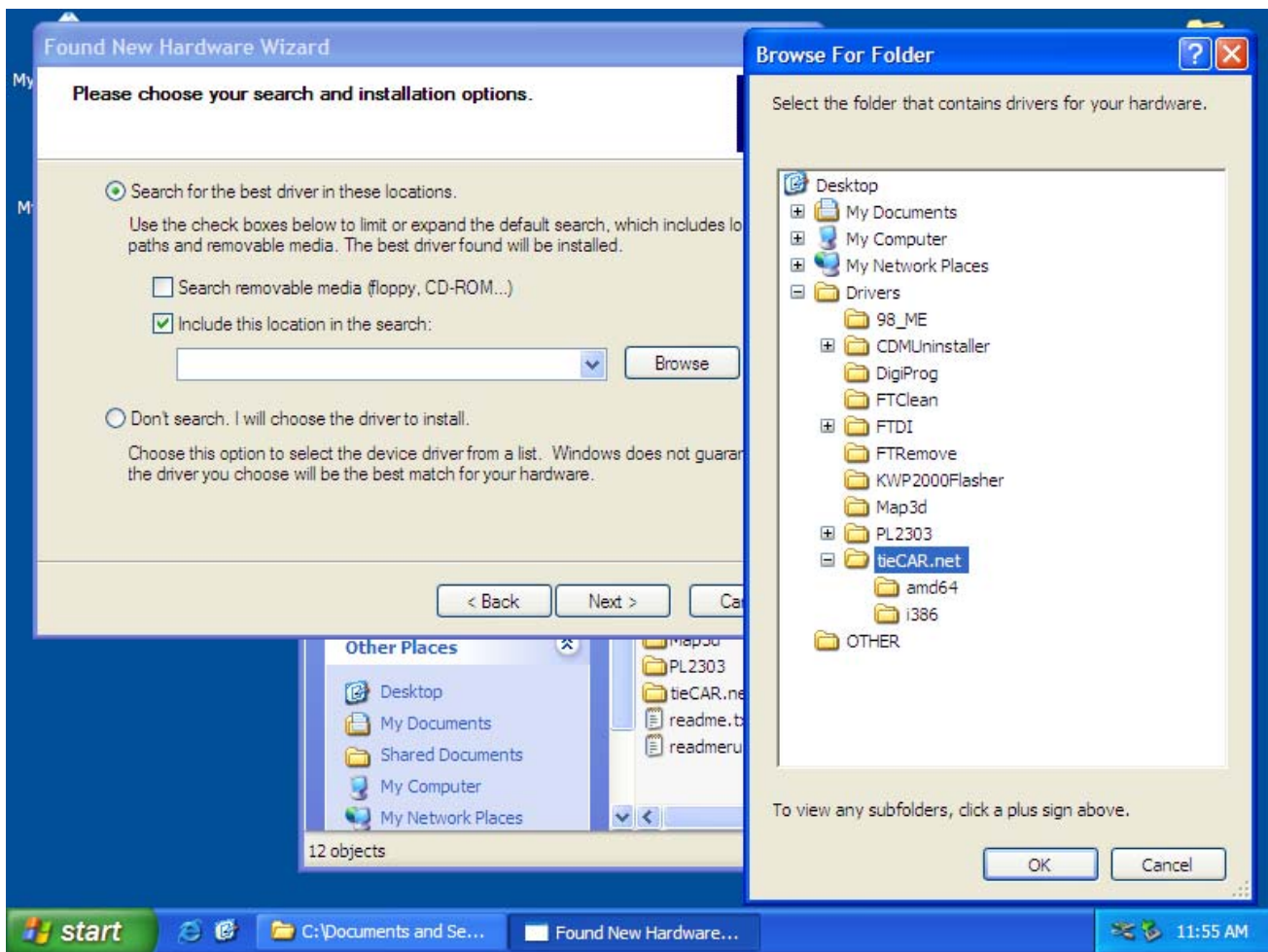


12. Select "Install from a list or specific location (Advanced)"

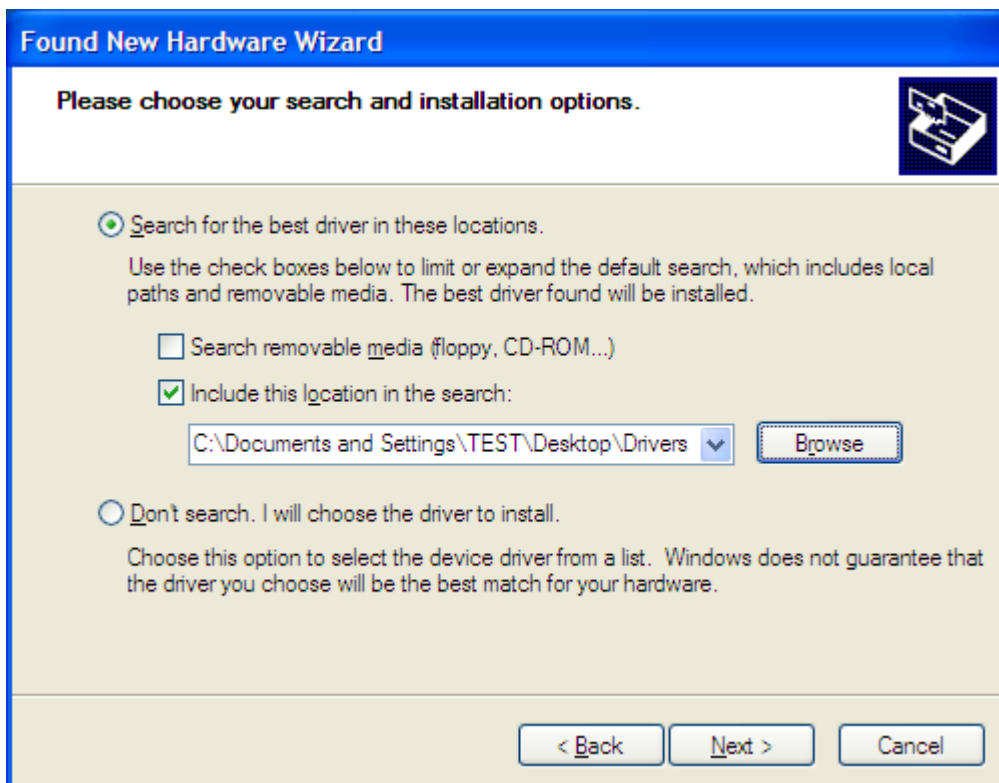


13. Press "Next >"

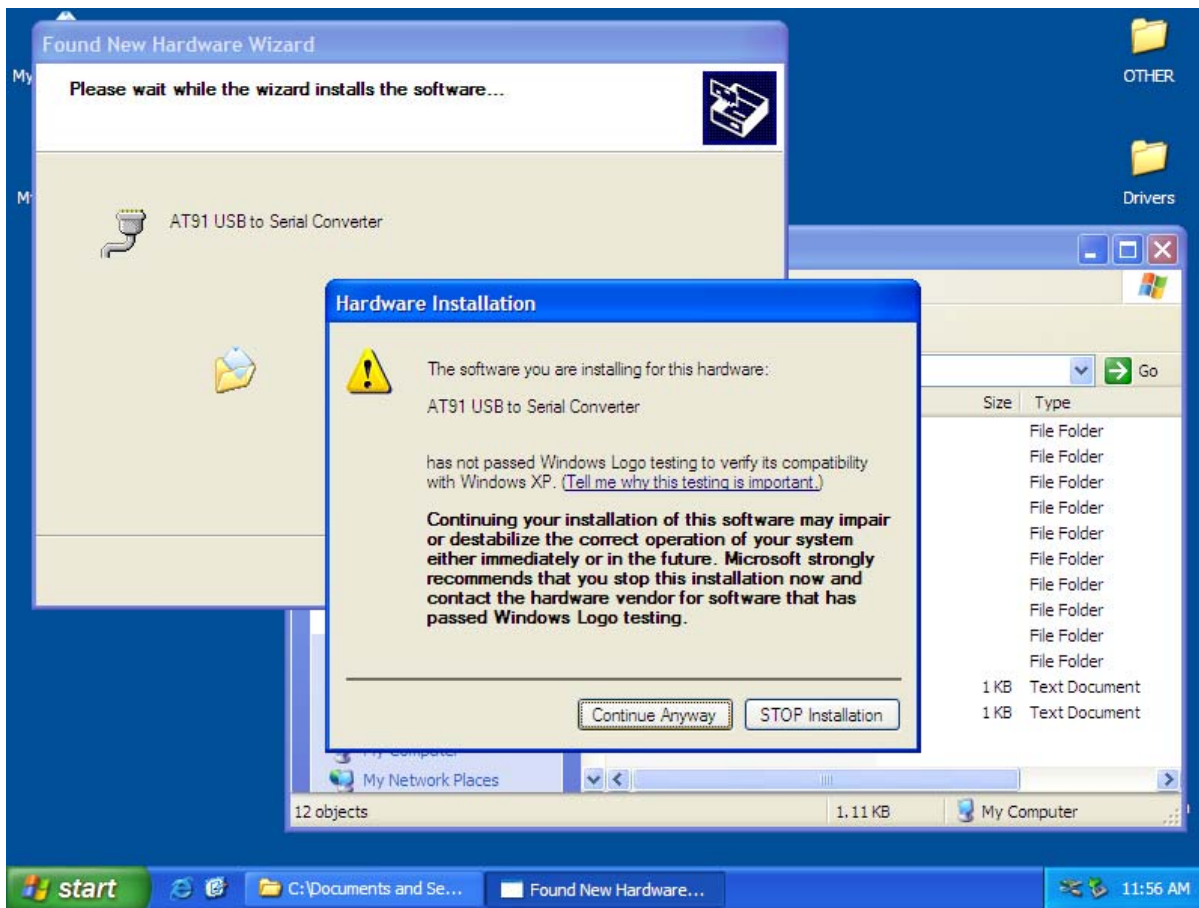
14. Uncheck "Search removable media"
15. Check "Include this location in search"
16. Press "Browse"
17. Select tree path to Desktop\Drivers\tieCAR.net



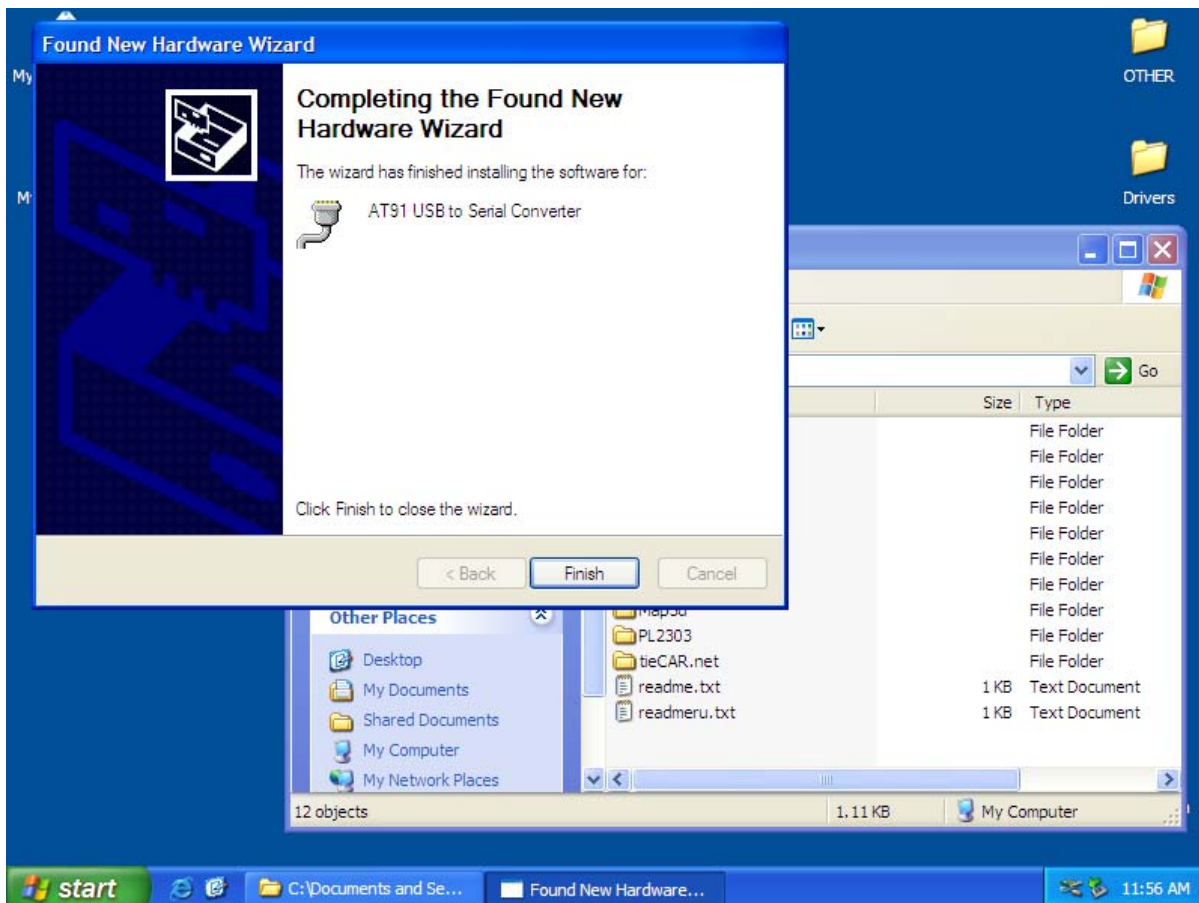
18. Press "OK"



19. Press "Next >"

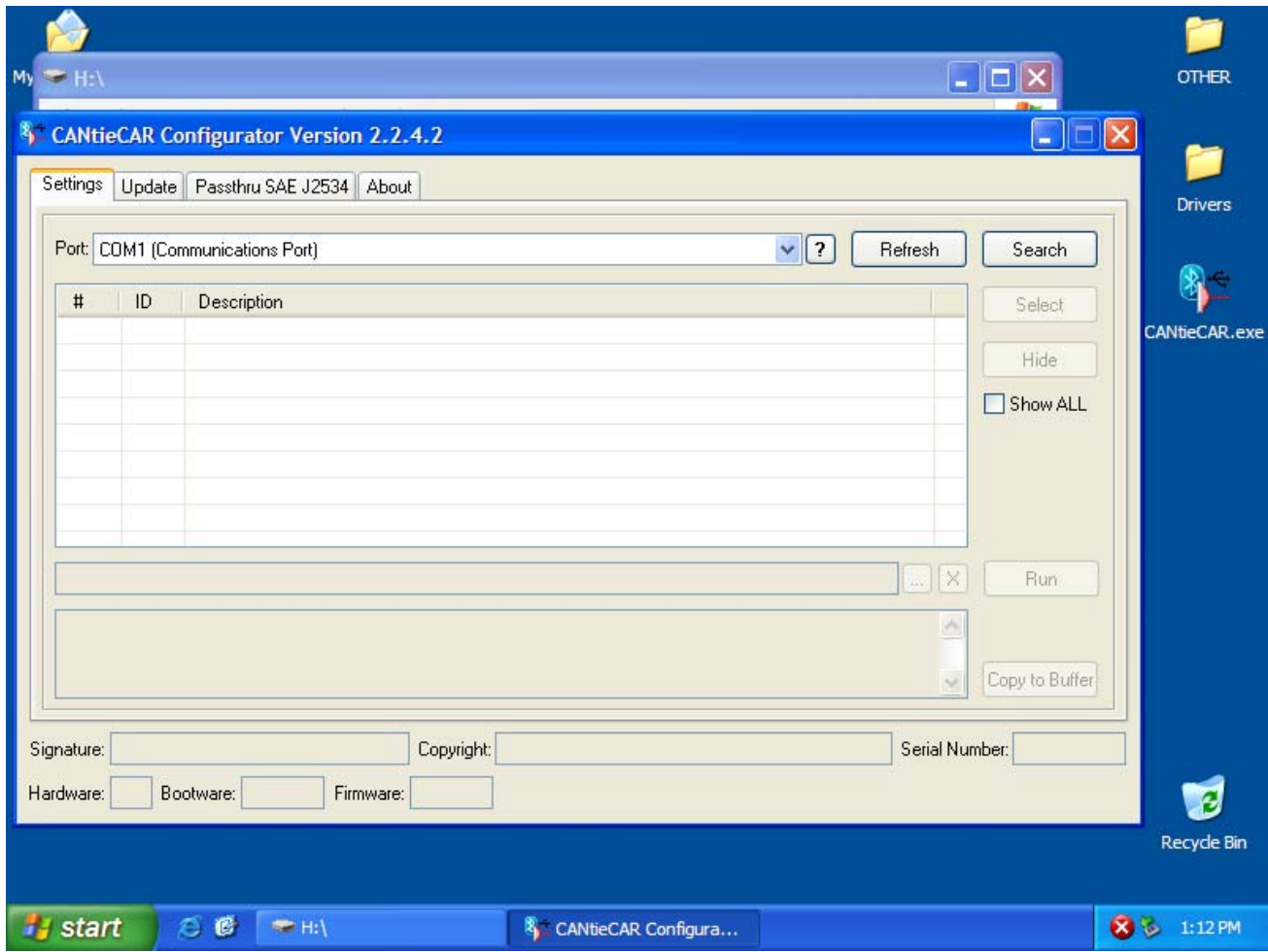


20. Press "Continue Anyway"

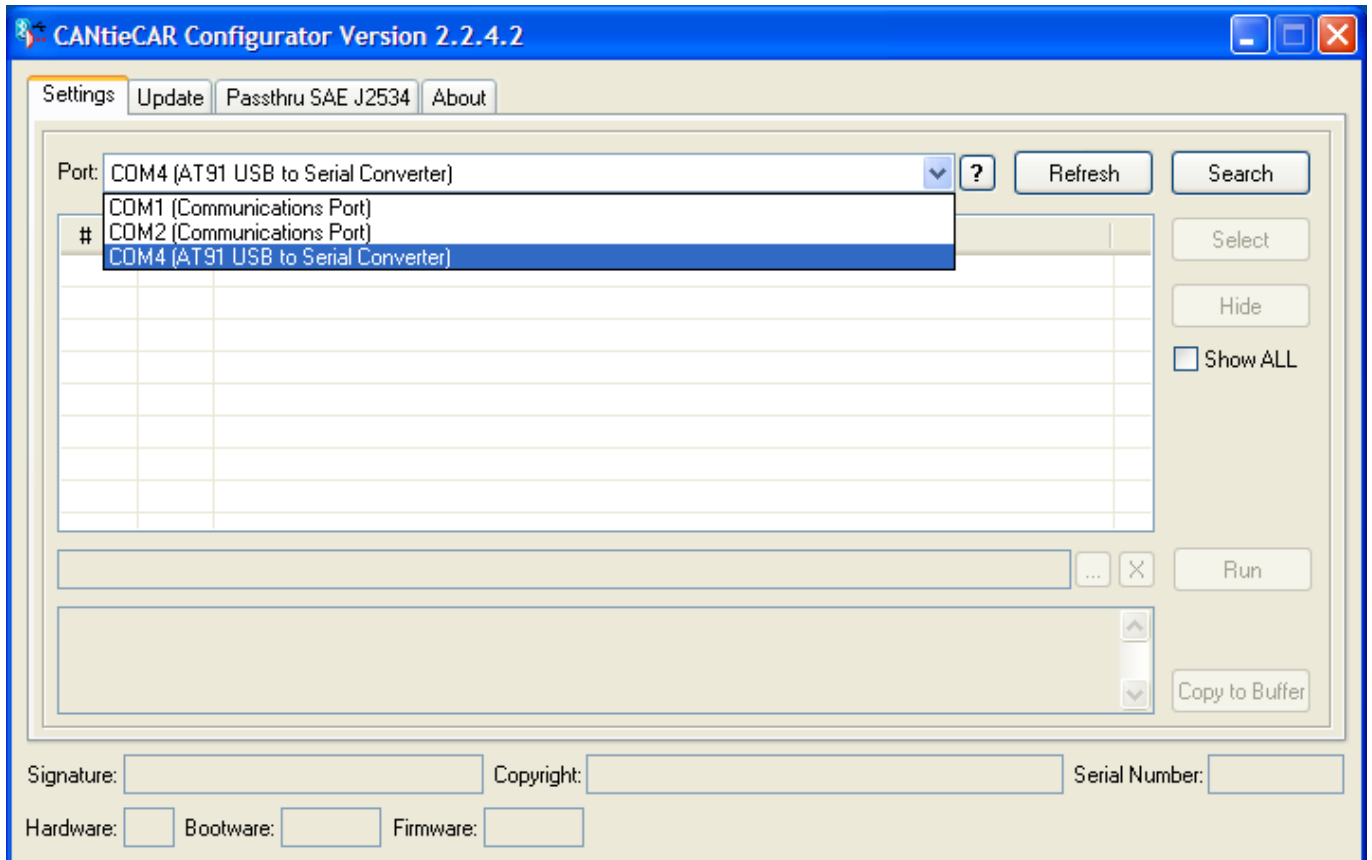


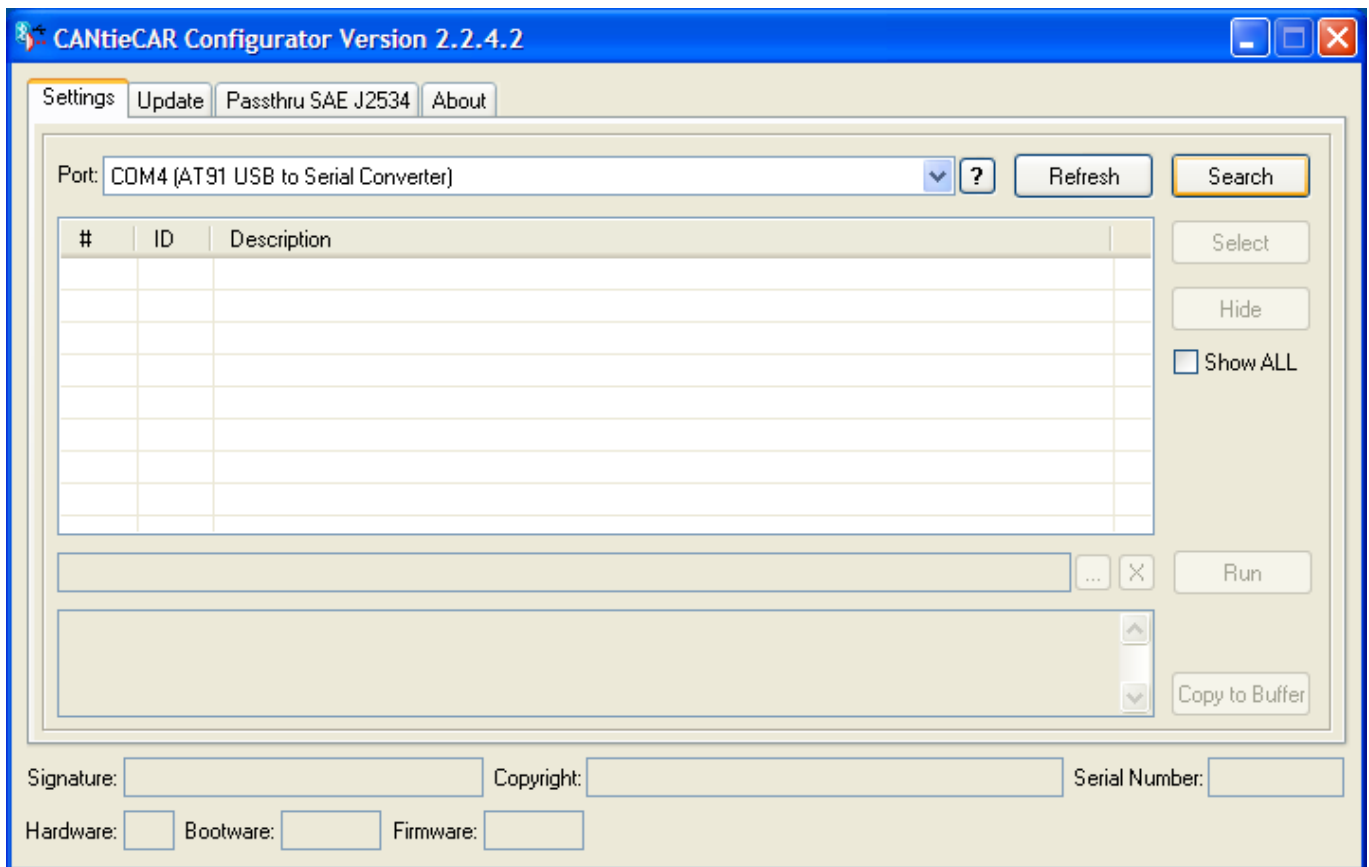
21. Virtual Com-Port driver has been installed. Press "Finish"

22. Run CANTieCAR Configurator application (it is present on your desktop)

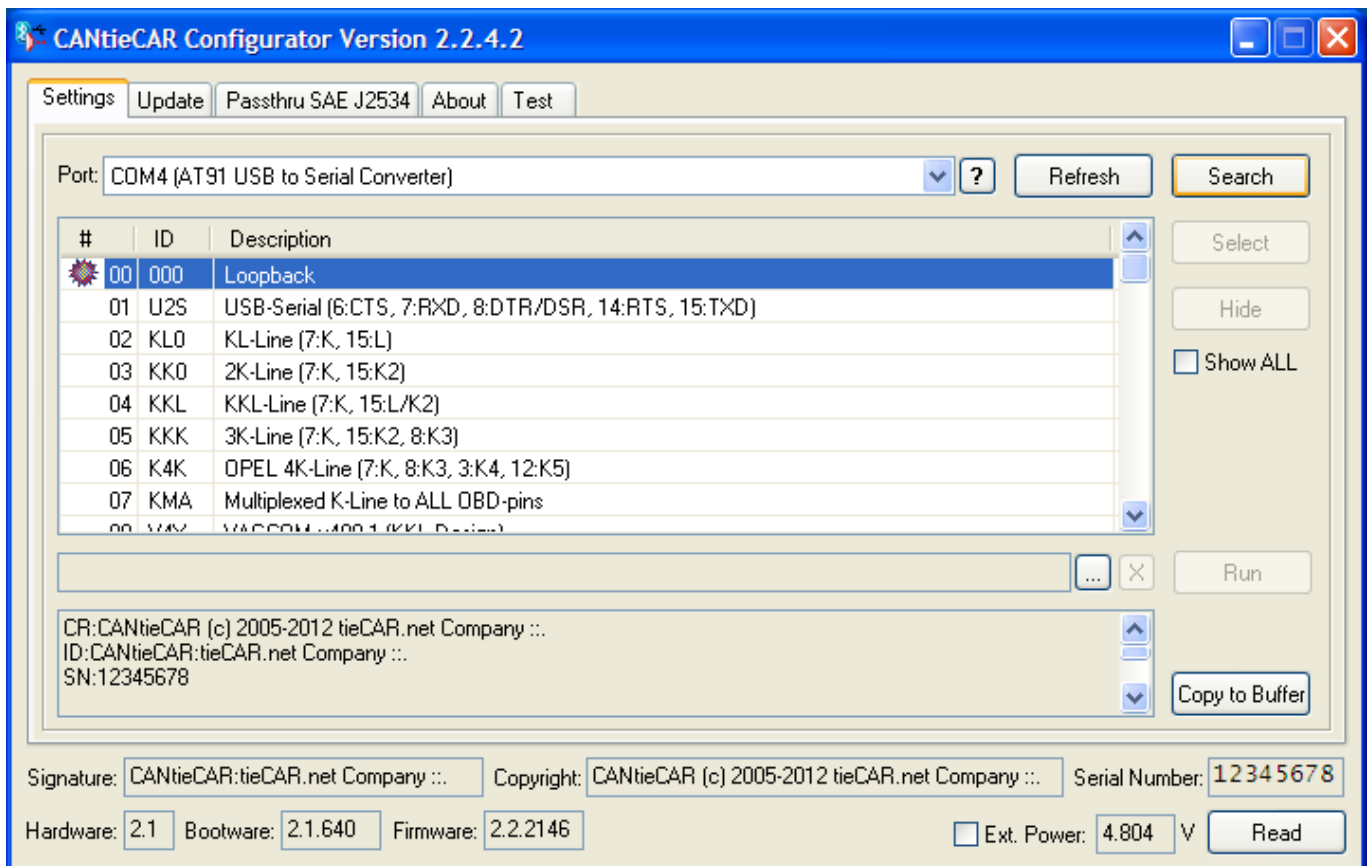


23. Select required Port





24. Press “Search”



25. Now you can see all activated modes

26. You can to change Port number in Device Manager or Press “?” to go directly to Port properties (Changing Port number may to require restart PC)

27. It is desirable (recommended) to select all modes one by one and install all drivers with Port number changing if it is required (remember about restart PC notification)

Mode	Description	Path
USB-Serial (6:CTS, 7:RXD, 8:DTR/DSR, 14:RTS, 15:TXD)	Modified FTDI	\\Drivers\tieCAR.net
KL-Line (7:K, 15:L)	Modified FTDI	\\Drivers\tieCAR.net
2K-Line (7:K, 15:K2)	Standard CDC	\\Drivers\tieCAR.net
KKL-Line (7:K, 15:L/K2)	Modified FTDI	\\Drivers\tieCAR.net
3K-Line (7:K, 15:K2, 8:K3)	Standard CDC	\\Drivers\tieCAR.net
OPEL 4K-Line (7:K, 8:K3, 3:K4, 12:K5)	Standard CDC	\\Drivers\tieCAR.net
Multiplexed K-Line to ALL OBD-pins	Standard CDC	\\Drivers\tieCAR.net
VAGCOM v409-1 (KKL-Design)	Modified FTDI	\\Drivers\tieCAR.net
RS485 Duplex (12:A, 13:B)	Standard CDC	\\Drivers\tieCAR.net
RS485 Half-Duplex (12:A, 13:B)	Standard CDC	\\Drivers\tieCAR.net
Carsoft BMW 6.5/7.3	Modified FTDI	\\Drivers\tieCAR.net
Carsoft MB 7.4	Modified FTDI	\\Drivers\tieCAR.net
Carsoft MB 7.4 OBDII	Modified FTDI	\\Drivers\tieCAR.net
Siemens Airbag 3.0	Modified FTDI	\\Drivers\tieCAR.net
NISSAN Consult I + Sync (10:TX, 2:RX, 7:SYNC)	Standard CDC	\\Drivers\tieCAR.net
NISSAN Consult I OBDII (12:TX, 13:RX)	Standard CDC	\\Drivers\tieCAR.net
DIESEL-kit v1.0	Standard CDC	\\Drivers\tieCAR.net
VOLVO 9998555	Modified FTDI	\\Drivers\tieCAR.net
P.A.Soft BMW Scanner v1.2.5	Standard CDC	\\Drivers\tieCAR.net
P.A.Soft BMW Scanner v1.3.6	Standard CDC	\\Drivers\tieCAR.net
P.A.Soft BMW Scanner v1.4.0 Demo	Standard CDC	\\Drivers\tieCAR.net
P.A.Soft BMW Scanner v1.4.x	Standard FTDI	\\Drivers\FTDI
BMW EDIABAS: STD:OBD	Standard CDC	\\Drivers\tieCAR.net
BMW EDIABAS: ADS	Standard CDC	\\Drivers\tieCAR.net
BMW EDIABAS: D-CAN Combo (STD:OBD K + D-CAN)	Standard CDC	\\Drivers\tieCAR.net
BMW EDIABAS: D-CAN Fast (STD:OBD D-CAN)	Standard CDC	\\Drivers\tieCAR.net
BMW EDIABAS: D-CAN Fxx (STD:OBD D-CAN for F-series)	Standard CDC	\\Drivers\tieCAR.net
BMW EDIABAS: JBE PT-CAN (STD:OBD + JBE CAN 500k)	Standard CDC	\\Drivers\tieCAR.net
BMW EDIABAS: JBE K-CAN (STD:OBD + JBE CAN 100k)	Standard CDC	\\Drivers\tieCAR.net
ELM323 v2.0+	Standard CDC	\\Drivers\tieCAR.net
ELM327 v1.4+	Standard CDC	\\Drivers\tieCAR.net
ELM327 v1.4+ (ScanTool.net)	Standard CDC	\\Drivers\tieCAR.net
DigiProg OBDII Flasher	Old Modified FTDI	\\Drivers\DigiProg
KWP2000 Flasher	Old Modified FTDI	\\Drivers\KWP2000Flasher
KWP2000 PLUS Flasher	Old Modified FTDI	\\Drivers\KWP2000Flasher
CMD EDC16 OBDII Flasher v1236 K-Line	Old Modified FTDI	\\Drivers\Map3d
CMD EDC16 OBDII Flasher v1244 K-Line	Old Modified FTDI	\\Drivers\Map3d
CMD EDC16 OBDII Flasher v1251 CAN	Old Modified FTDI	\\Drivers\Map3d
CMD EDC16 OBDII Flasher v1255 K-Line	Old Modified FTDI	\\Drivers\Map3d
CMD MAP3Diag	Old Modified FTDI	\\Drivers\Map3d
CMD MPC5xx BDM Programmer v1251 (4/5:GND-6, 6:RST-1, 7:DI-7, 8:SCK-5, 14:IGN-2, 15:DO-8, 16:PWR-9)	Old Modified FTDI	\\Drivers\Map3d
Galletto v1050/1080 EOBDII Flasher	Standard FTDI	\\Drivers\FTDI
Galletto v1245 EOBDII Flasher	Standard FTDI	\\Drivers\FTDI
Galletto v1250 EOBDII Flasher	Standard FTDI	\\Drivers\FTDI
Galletto v1260 EOBDII Flasher	Standard FTDI	\\Drivers\FTDI
VAG K+CAN Commander v1.4/v2.5/v3.6	Standard FTDI	\\Drivers\FTDI
LICZNIK USB Dongle for v4.8a	Standard FTDI	\\Drivers\FTDI
Lawicel CAN232 v3 (6:High, 14:Low)	Standard CDC	\\Drivers\tieCAR.net
Lawicel CANUSB v1 (6:High, 14:Low)	Standard FTDI	\\Drivers\FTDI
PonyProg2000 (4/5:GND-10, 6:IN#-6, 7:OUT#-5, 8:SCLK#-4, 14:VCC/RST-1/3, 15:RST#-2)	Modified FTDI	\\Drivers\tieCAR.net
OpenPort v1	Standard FTDI	\\Drivers\FTDI
OpenPort v1.2	Standard FTDI	\\Drivers\FTDI
OpenPort v1.3 Universal (11:Vpp/Boot)	Standard FTDI	\\Drivers\FTDI
FiatECUScan v3.4+	Standard CDC	\\Drivers\tieCAR.net
PassThru SAE J2534-1/2	Standard CDC	\\Drivers\tieCAR.net
PassThru SAE J2534-1/2 BMW up to 2008	Standard CDC	\\Drivers\tieCAR.net